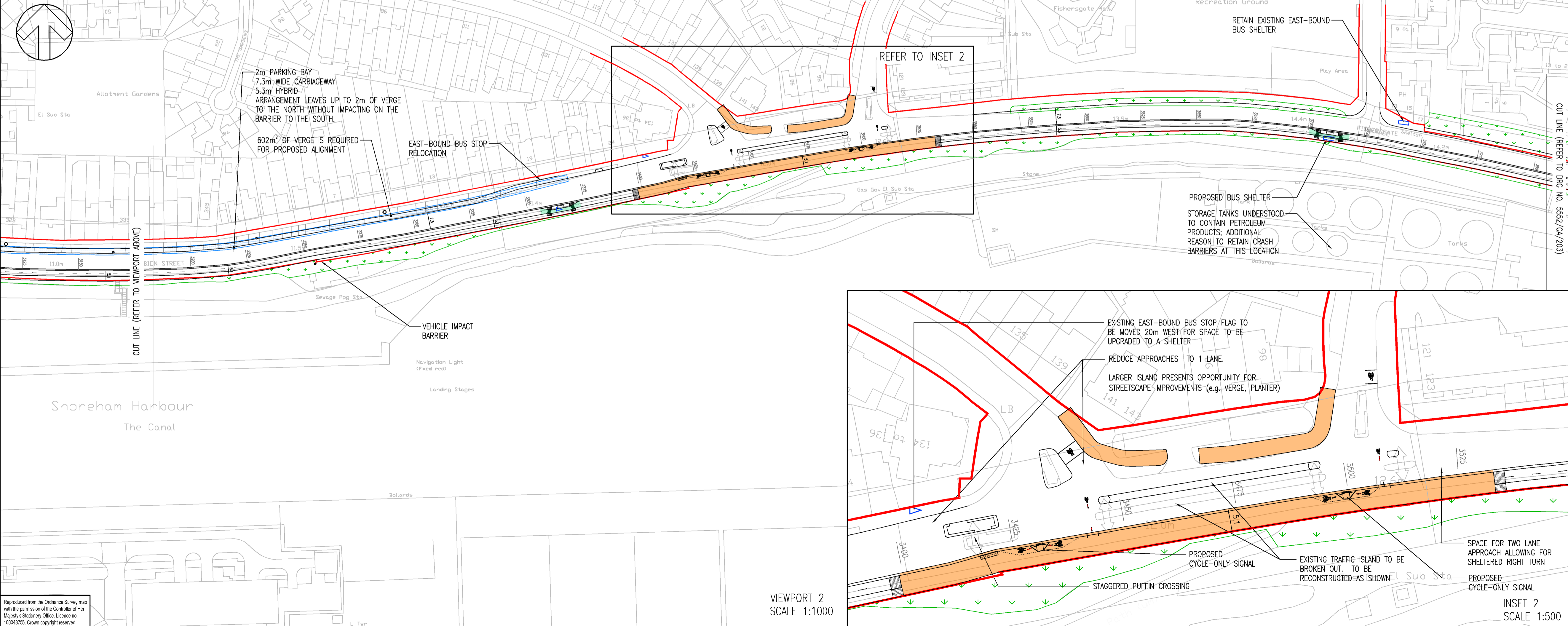
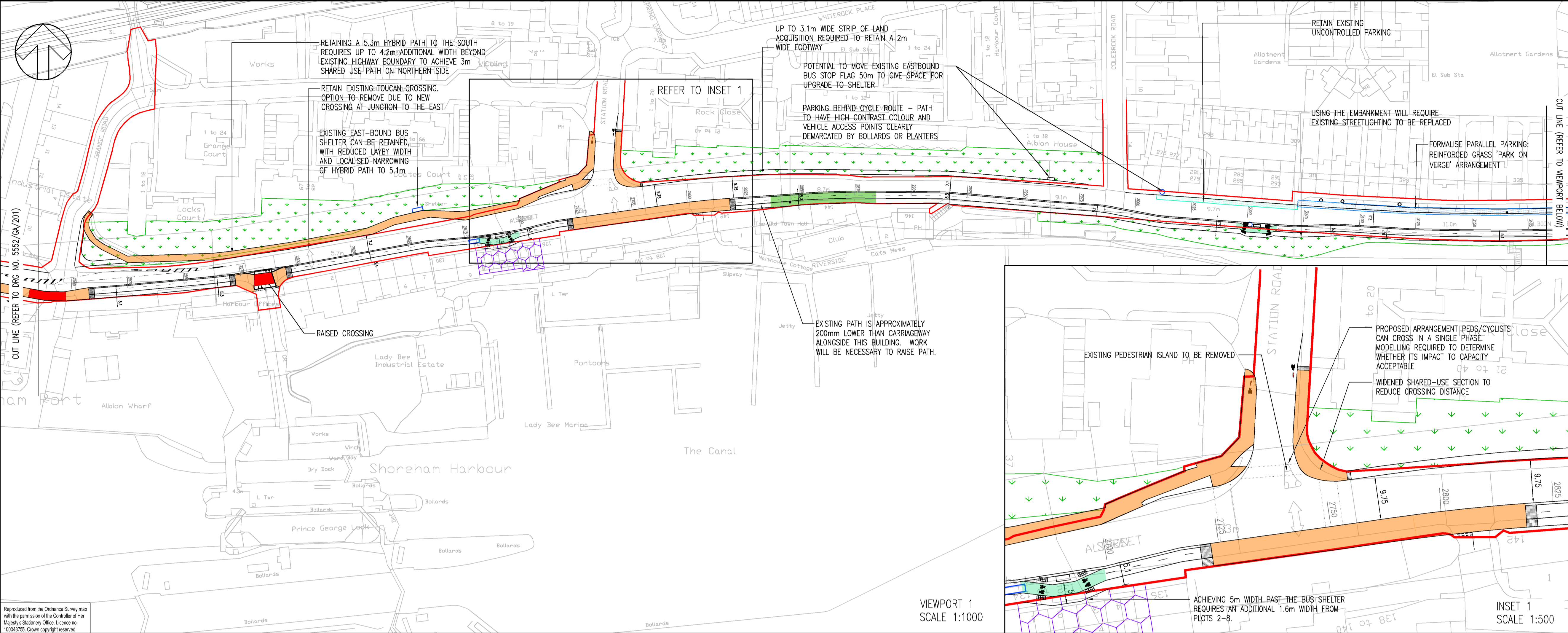


DO NOT SCALE

- NOTES:
1. ALL DIMENSIONS ARE IN METRES UNLESS OTHERWISE STATED.
 2. DO NOT SCALE THIS DRAWING.
 3. THIS IS A FEASIBILITY DESIGN AND IS NOT TO BE USED FOR CONSTRUCTION. IT HAS BEEN BASED ON OS DATA THEREFORE THE ACCURACY OF THE DIMENSIONS CAN NOT BE GUARANTEED.

- KEY:
- HIGHWAY BOUNDARY
 - ▭ GRASSED AREA
 - ▭ 2-8 ALBION STREET DEVELOPMENT OPPORTUNITY
 - ▭ EXISTING BUS STOP (FLAG)
 - EXISTING BUS STOP (LAMP POST)
 - ▭ EXISTING BUS SHELTER
 - ▭ EXISTING ON-ROAD PARKING
 - ▭ EXISTING ON-VERGE PARKING
 - ↔ CROSSING POINT
 - ▭ SHARED USE PATH
 - ▭ PEDESTRIAN CROSSING LOCATION
 - ▭ RED-COLOURED CONTRAST PAVING



| REV | DATE | BY | DESCRIPTION | CHK | APP |
|-----|----------|-----|-----------------------------------|-----|-----|
| C | 22/02/19 | YO | UPDATED BASED ON CLIENTS COMMENTS | H | TP |
| B | 28/01/19 | YO | UPDATED BASED ON CLIENTS COMMENTS | H | TP |
| A | 22/06/18 | TPS | FIRST ISSUE | H | TP |

DRAWING STATUS: S2 - FOR INFORMATION

wsp

Regus House, Southampton International Business Park
George Curl Way, Southampton, Hampshire, SO18 2RZ
Tel: +44 (0)2380 302529 Fax: +44 (0)2380 302001
www.wsp.com

CLIENT: WEST SUSSEX COUNTY COUNCIL

ARCHITECT: -

SITE/PROJECT: SHOREHAM STP PHASE 2
A259 HIGH QUALITY CYCLE ROUTE

TITLE: FEASIBILITY DESIGN
SHEET 3 OF 4

| SCALE @ A1: | CHECKED: | APPROVED: |
|-------------|-------------|-----------|
| 1:1000 | HL | DP |
| PROJECT NO: | DESIGNED: | DRAWN: |
| 70025552 | TPS | AVI |
| DATE: | February 19 | |
| DRAWING NO: | 5552/GA/202 | |
| REV: | C | |

© WSP UK Ltd

Reproduced from the Ordnance Survey map with the permission of the Controller of Her Majesty's Stationery Office. Licence no. 100048735. Crown copyright reserved.